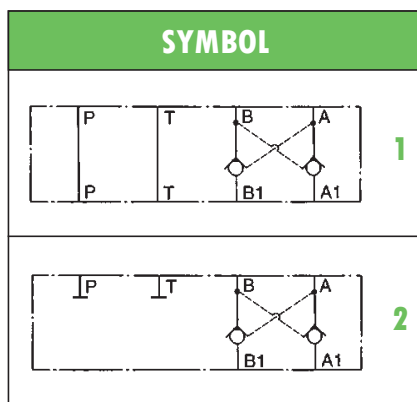


HYDRAULIC COMPACT STACKABLE CHECK VALVES type **AMF-CP** PILOT OPERATED

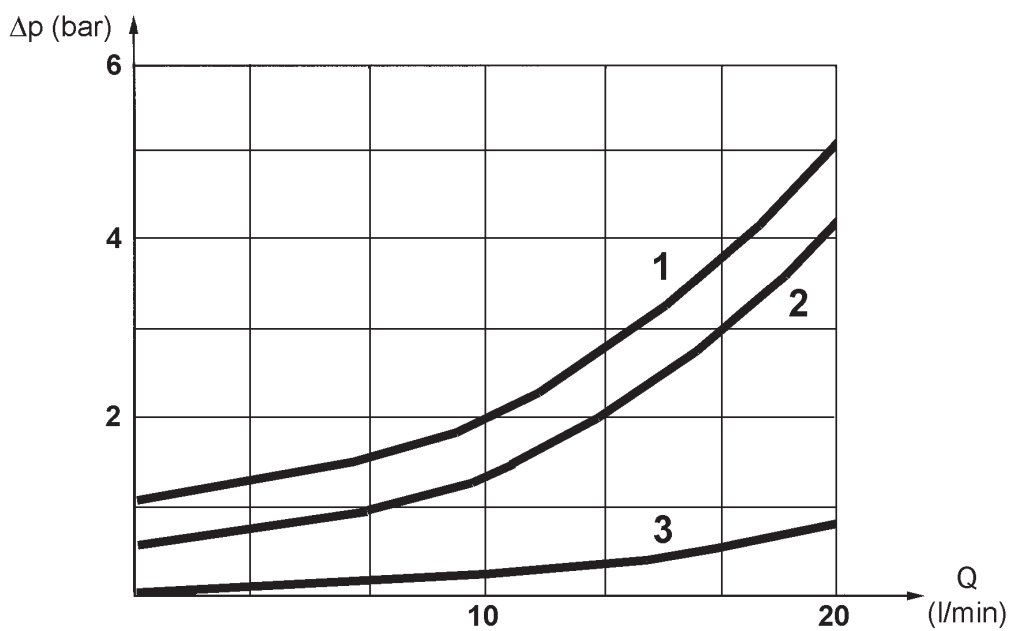
- Hydraulic check valves pilot operated
- **AMF / HDF2** interface, stackable assembly
- Pilot ratio 1: 2,2
- Max operating pressure: 250 bar
- Max recommended flow: 20 l/min
- Mass: 0,40 kg
- Suitable for mineral oil according to ISO 18/16/14 filtration class or better. Recommended viscosity range: 10 to 60cSt



ORDERING CODE	
AMF(C) – CP – AB	
AMF	AMF compact stackable valve - P,T free (see symbol 1)
(C)	End of stackable module - P, T plugged (see symbol 2)
CP	Pilot operated check valve
AB	Dual check valve on A and B

TYPICAL DIAGRAM

Typical Δp -Q curves for valves **AMF-CP**, with mineral oil at 36cSt and 50°C for flow A1 ↔ A, B1 ↔ B and free channels

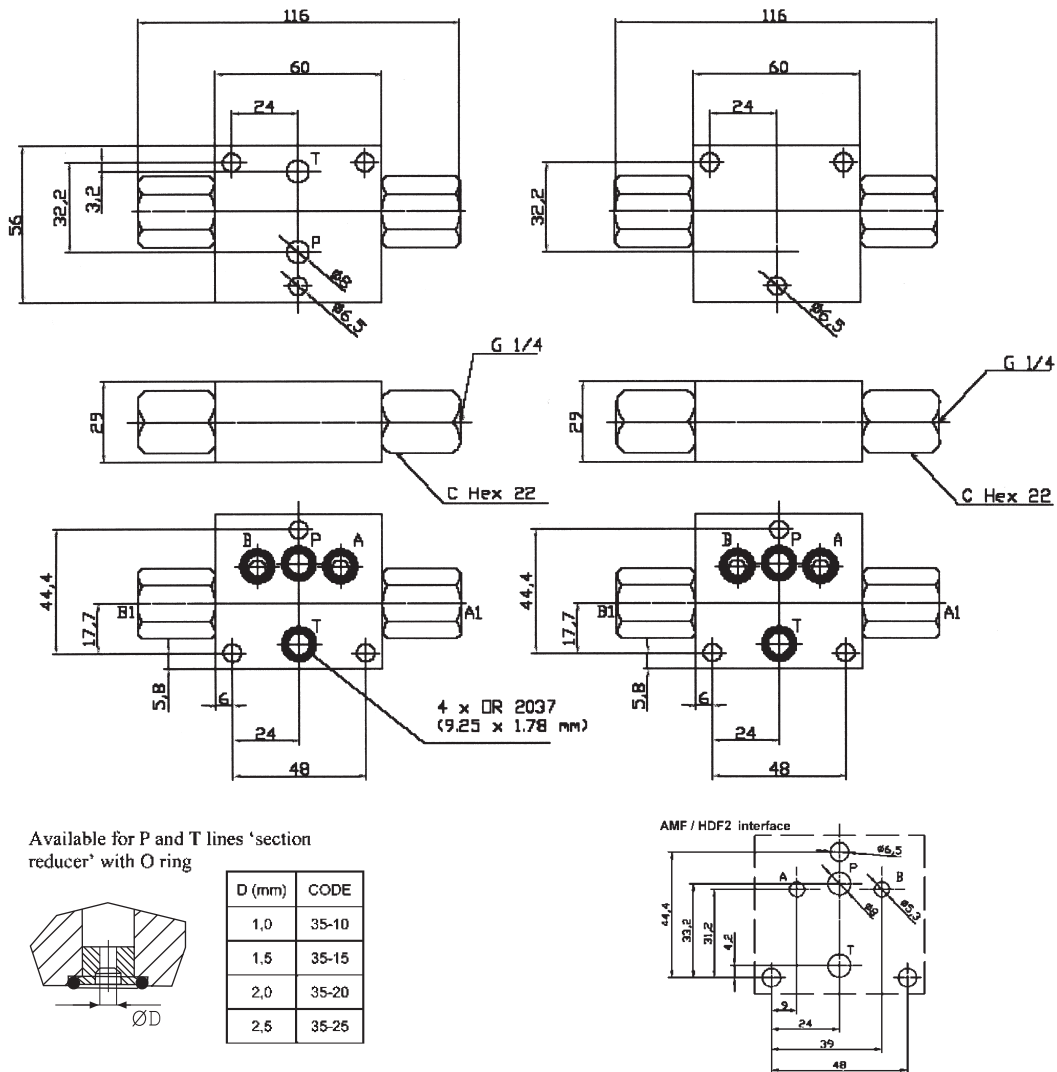


1) A → A1 and B → B1 2) A1 → A and B1 → B 3) Free channels

OVERALL DIMENSIONS

AMF-CP-AB

AMFC-CP-AB



Subject to technical and dimensional changes without notice

TYPICAL SECTION

1	Spring	5	Seal
2	Poppet	6	Check device holder
3	Pilot piston	7	Check valve body
4	Main body		

