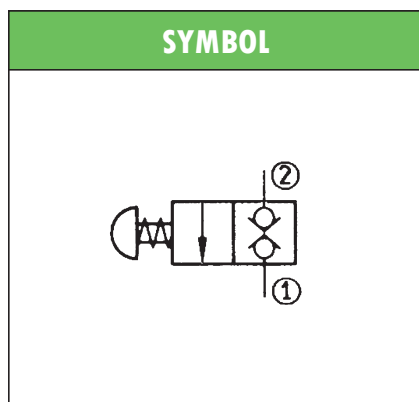
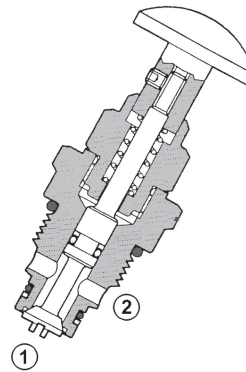


HYDRAULIC SCREW-IN VALVES type **VEM-34** N.C. 1-DIR. FLOW – MANUALLY OPERATED

- Suitable for standard cavity **3/4" 16 UNF**
- **2-way manually** operated poppet valves
- **Normally closed**, one direction flow
- Stroke adjustment by rotation of the knob to the desired position.
A set screw will fix the new position
- Maximum operating pressure: 350 bar
- Maximum recommended flow rate: 20 l/min
- Operating temperature: -30°C +50°C
- Steel body zinc plated
- Poppet in hardened and grinded steel
- Mass 0,13 kg



ORDERING CODE

VEM-34-NC/20

VEM	2-way manually operated poppet valve
34	Size 3/4" – 16 UNF
NC	Normally closed
20	Drawing

TYPICAL DIAGRAM

Typical Δp - Q curves for valves **VEM.34** in standard configuration, with mineral oil at 42cSt and 50°C for flow 2 → 1

